

3.30

## SPIE VISIVE DI PASSAGGIO FILETTATE VAPOSCOPI - SPECULE VISIVE

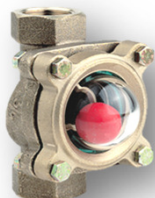
VALVOIND Srl Via Pascoli, 5 - 24060 Bagnatica (Bergamo) Tel. 035.681919-Fax. 035.684461


**Valvoind**

valvole industriali

SP 101

SPIA DI PASSAGGIO A 1 VETRO FILETTATA



OTTONE



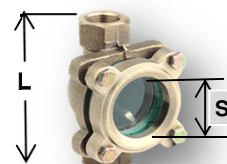
INOX

PER FLUIDI

| SPIE PER VAPORE |        |           |            |        |       |
|-----------------|--------|-----------|------------|--------|-------|
| CODICI          | CORPO  | CON VETRO | CON ALETTA | PRESS. | TEMP. |
| SP101..         | BRONZO | TEMPERATO | FISSA      | PN 16  | 150°C |

| SPIE PER FLUIDI CON SFERA INTERNA |        |                |        |        |       |       |
|-----------------------------------|--------|----------------|--------|--------|-------|-------|
| SP201..                           | BRONZO | policarbonato  | Moplen | FLUIDO | PN 10 | 110°C |
| SP202..                           |        | PIREX          | PTFE   |        | PN 6  | 280°C |
| SP203..                           |        | Cristallo temp | Moplen | PN 16  | 110°C |       |
| SP205..                           | AISI   | carbonato      | Moplen | PN 10  | 110°C |       |
| SP206..                           | 316    | PIREX          | PTFE   | PN 6   | 280°C |       |

| CORPO IN BRONZO |                    |     |    |    | CORPO IN INOX |                    |     |    |    |
|-----------------|--------------------|-----|----|----|---------------|--------------------|-----|----|----|
| CODICI          | SP201.. / SP 203.. |     |    |    | CODICI        | SP205.. / SP 206.. |     |    |    |
|                 | Ø                  | L   | H  | S  |               | Ø                  | L   | H  | S  |
| SP...03         | 3/8"               | 109 | 40 | 44 | SP...04       | 1/2"               | 105 | 73 | 44 |
| SP...04         | 1/2"               | 97  | 72 | 44 | SP...05       | 3/4"               | 105 | 73 | 44 |
| SP...05         | 3/4"               | 100 | 76 | 44 | SP...06       | 1"                 | 105 | 73 | 44 |
| SP...06         | 1"                 | 103 | 80 | 44 |               |                    |     |    |    |

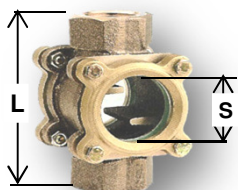
SPIE PER VAPORE  
CORPO IN BRONZO

CON ALETTA FISSA

| codice  | Ø      | L   | H  | S  |
|---------|--------|-----|----|----|
| SP10103 | 3/8"   | 107 | 40 | 44 |
| SP10104 | 1/2"   | 95  | 40 | 44 |
| SP10105 | 3/4"   | 100 | 44 | 44 |
| SP10106 | 1"     | 107 | 46 | 44 |
| SP10107 | 1 1/4" | 128 | 57 | 50 |
| SP10108 | 1 1/2" | 137 | 60 | 50 |
| SP10109 | 2"     | 164 | 72 | 63 |
| SP10110 | 2 1/2" | 180 | 80 | 82 |

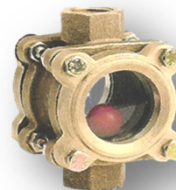
SP 102

SPIA DI PASSAGGIO A DOPPIO VETRO IN BRONZO FILETTATA PN 16

PER VAPORE  
verticale e orizzontale

| CODICI  | DESCRIZIONE      | UTILIZZO |
|---------|------------------|----------|
| SP102.. | CON ALETTE FISSE | VAPORE   |
| SP212.. | CON SFERA MOPLEN | FLUIDO   |

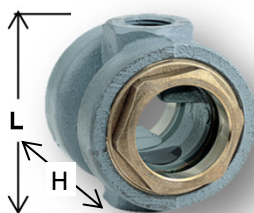
Corpo : in Bronzo  
Vetro : Cristallo temperato  
Temp. max. : 150°C  
Press. A 120°C : 16 bar  
Attacchi : Filettati gas

PER FLUIDI  
verticale

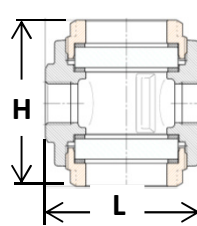
| codice  | Ø      | L   | H  | S  |
|---------|--------|-----|----|----|
| SP...03 | 3/8"   | 107 | 40 | 44 |
| SP...04 | 1/2"   | 95  | 40 | 44 |
| SP...05 | 3/4"   | 100 | 44 | 44 |
| SP...06 | 1"     | 107 | 46 | 44 |
| SP...07 | 1 1/4" | 128 | 57 | 50 |
| SP...08 | 1 1/2" | 137 | 60 | 50 |
| SP...09 | 2"     | 164 | 72 | 63 |
| SP...10 | 2 1/2" | 180 | 80 | 82 |

SP 107

SPIA DI PASSAGGIO A DOPPIO VETRO IN GHISA PN 16



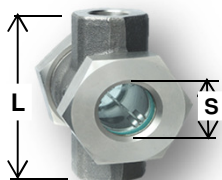
Impiego : impianti a vapore  
Corpo : in Bronzo  
Vetro : Cristallo temperato  
Temp. max. : 150°C  
Press. A 120°C : 16 bar  
Attacchi : Filettati gas



| codice  | Ø      | L   | H   |
|---------|--------|-----|-----|
| SP10704 | 1/2"   | 80  | 82  |
| SP10705 | 3/4"   | 90  | 94  |
| SP10706 | 1"     | 90  | 94  |
| SP10707 | 1 1/4" | -   | -   |
| SP10708 | 1 1/2" | 110 | 130 |
| SP10709 | 2"     | 110 | 130 |

SP 103-104

SPIA DI PASSAGGIO A DOPPIO VETRO IN ACCIAIO PN 16



Impiego : impianti a vapore  
Corpo : 

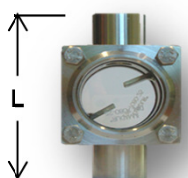
|          |              |
|----------|--------------|
| SP 103.. | ACCIAIO A105 |
| SP 104.. | AISI 316     |

  
Vetro : Cristallo temperato  
Temp. max. : 150°C  
Press. A 120°C : 16 bar  
Attacchi : Filettati gas

| codice  | Ø      | L   | H   | S  |
|---------|--------|-----|-----|----|
| SP...04 | 1/2"   | 90  | 80  | 28 |
| SP...05 | 3/4"   | 90  | 80  | 28 |
| SP...06 | 1"     | 100 | 90  | 35 |
| SP...07 | 1 1/4" | 127 | 110 | 55 |
| SP...08 | 1 1/2" | 127 | 110 | 55 |
| SP...09 | 2"     | 140 | 125 | 65 |

SP 108-109

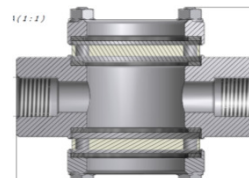
SPIA DI PASSAGGIO A DOPPIO VETRO IN ACCIAIO PN 25



Impiego : impianti a vapore  
Corpo : 

|          |              |
|----------|--------------|
| SP 108.. | ACCIAIO A105 |
| SP 109.. | AISI 316     |

  
Vetro : Cristallo temperato  
Temp. max. : 150°C  
Press. A 120°C : 40 bar  
Attacchi : Filettati gas  
**A RICHIESTA : PN 40**



| codice  | Ø      | L   |
|---------|--------|-----|
| SP...04 | 1/2"   | 105 |
| SP...05 | 3/4"   | 105 |
| SP...06 | 1"     | 105 |
| SP...07 | 1 1/4" | 130 |
| SP...08 | 1 1/2" | 140 |
| SP...09 | 2"     | 155 |

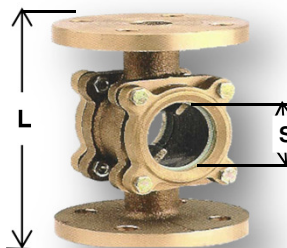
3.31

## SPIE VISIVE DI PASSAGGIO FLANGIATE VAPOSCOPI - SPECULE VISIVE

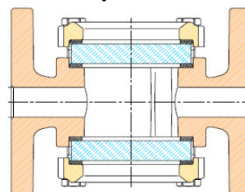
VALVOIND Srl Via Pascoli, 5 - 24060 Bagnatica (Bergamo) Tel. 035.681919-Fax. 035.684461

**Valvoind**

valvole industriali

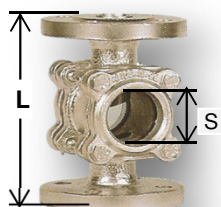
**SP 106****SPIA DI PASSAGGIO IN BRONZO A DOPPIO CRISTALLO FLANGIATA PN 16**

**Impiego** : impianti a vapore, acqua e fluidi compatibili  
**Corpo** : in Bronzo ad alette fisse  
**Vetro** : Cristallo temperato  
**Temp. max.** : 150 °C  
**Press. A 120 °C** : 16 bar  
**Attacchi** : Flang. UNI PN 16



a richiesta : corpo senza alette fisse ma con sfera in teflon per liquidi

| codice  | Ø   | L   | S   |
|---------|-----|-----|-----|
| SP10604 | 15  | 112 | 44  |
| SP10605 | 20  | 121 | 44  |
| SP10606 | 25  | 135 | 44  |
| SP10607 | 32  | 148 | 50  |
| SP10608 | 40  | 178 | 50  |
| SP10609 | 50  | 201 | 63  |
| SP10610 | 65  | 239 | 82  |
| SP10611 | 80  | 259 | 94  |
| SP10612 | 100 | 300 | 110 |

**SP 110-120****SPIA DI PASSAGGIO A DOPPIO CRISTALLO FLANGIATA**

**Impiego** : impianti a vapore, acqua e fluidi compatibili  
**Attacchi** : Flangiati UNI e ANSI

| Codice   | Corpo     | PN                 | VETRI                  | TEMP   |
|----------|-----------|--------------------|------------------------|--------|
| SP 110.. | GHISA     | PN 10/16<br>ASA150 | Cristallo<br>temperato | 160 °C |
| SP 115.. | WCB.A216  |                    |                        |        |
| SP 120.. | CF8M.A351 | ASA 300            | Borosilicato           | 280 °C |
| SP 130.. | WCB.A216  |                    |                        |        |
| SP 131.. | CF8M.A351 | ASA 300            |                        |        |

|          |           |                       |              |        |
|----------|-----------|-----------------------|--------------|--------|
| SP 111.. | GHISA     | PN 10/16/25<br>ASA150 | Borosilicato | 280 °C |
| SP 116.. | WCB.A216  |                       |              |        |
| SP 121.. | CF8M.A351 | ASA 300               | Mica         | 320 °C |
| SP 140.. | WCB.A216  |                       |              |        |
| SP 141.. | CF8M.A351 | ASA 300               |              |        |

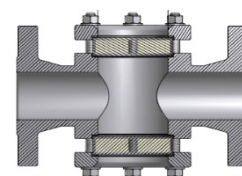
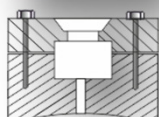
|          |           |                   |      |        |
|----------|-----------|-------------------|------|--------|
| SP 117.. | WCB.A216  | PN 25<br>ANSI 300 | Mica | 320 °C |
| SP 122.. | CF8M.A351 |                   |      |        |

A) Vuota - B) con lavavetri - D) con ventolina

: per temperature superiori a 500 °C

: corpo senza alette fisse ma con sfera in teflon per liquidi

| codice  | DN  | L   | S   |
|---------|-----|-----|-----|
| SP...04 | 15  | 95  | 45  |
| SP...05 | 20  | 150 | 45  |
| SP...06 | 25  | 160 | 45  |
| SP...07 | 32  | 180 | 50  |
| SP...08 | 40  | 200 | 50  |
| SP...09 | 50  | 230 | 60  |
| SP...10 | 65  | 290 | 85  |
| SP...11 | 80  | 310 | 85  |
| SP...12 | 100 | 350 | 105 |
| SP...13 | 125 | 400 | 140 |
| SP...14 | 150 | 480 | 160 |
| SP...15 | 200 | 600 | 170 |
| SP...16 | 250 | 730 | 255 |

**LK 300****SPECULE VISIVE PER SERBATOI**

Spie visive eseguite a disegno

con raggio di curvatura "r" in funzione del Ø del serbatoio.  
In AISI 304/316 possono essere rettangolari o circolari e possono essere dotate di retro illuminazione.

Pressioni di esercizio a richiesta

